

COMTELCO

Technical Specification

2Y33810CC

806-960 MHz 15dB Gain

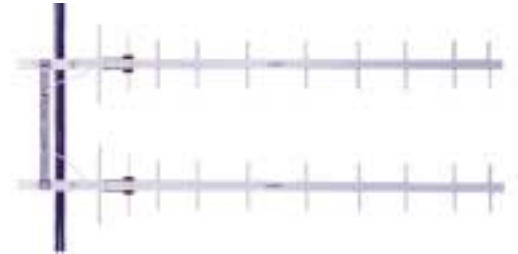
HEAVY DUTY STACKED YAGI ANTENNA KIT

High Performance: This kit includes 2 Y33810 heavy duty yagi antennas that are terminated with Type N male connectors that mate with a CC850 which is also supplied. This combination provides 15dBd gain of wide band performance.

Rugged and weatherproof: The construction of our heavy duty yagis feature 1" aluminum U channel with 3/8" solid elements. All exposed areas are coated with UV polyester. The balun assembly is filled and sealed with elastomeric thermoplastic.

The CC850 is completely sealed for weatherproof operation. The mounting holes provide the proper spacing for stacking. The system uses standard 50 ohm cable.

Lightweight and Durable: This kit can be easily installed by one person. It is designed to provide years of dependable service.



ELECTRICAL SPECIFICATIONS:

GAIN:	15dBd
FRONT TO BACK:	20dB
FREQUENCY:	-06 806-866MHz
	-25 825-896MHz
	-96 896-960MHz
BANDWIDTH:	60MHz <1.5:1 VSWR
	80MHz <2.0:1 VSWR
RATING :	300 watts
IMPEDANCE:	50 ohms

MECHANICAL SPECIFICATIONS:

MATERIAL:	1" aluminum U channel boom
	3/8" solid elements
FINISH:	UV inhibited polyester coat
BOOM LENGTH:	48"
WEIGHT:	8 lbs.
MOUNTING:	2 3/8" mast, stainless steel hardware
FLAT PLATE AREA:	.998 ft ²
WIND RATING:	125 MPH
WIND LOAD:	67.4 lbs.